
D-3 STUDY GUIDE

HORSE MANAGEMENT EXPECTATIONS

The candidate should be able to demonstrate simple skills without assistance, and to discuss care of the mount, using common horse terms.

The use of the 2012 USPC D Manual of Horsemanship, 2nd Edition is required in order to complete this study guide.

PRESENTATION/TURNOUT/TACK

- *Rider in safe and neat attire, in accordance with the Standards of Proficiency (SOP).*
- *Mount to be well brushed (no sweat), clean (no dirt), with feet picked out, showing farrier care. Mane and tail brushed and eyes, nose, lips, and dock wiped off.*
- *Tack to be safe, especially stitching on stirrups/girth, and clean. No jockeys or dust, stress points clean, stirrup pads (if used) clean, and bit clean. All tack must be properly adjusted.*
- *Groom and tack up independently*
- *Describe the bit your mount is wearing and its adjustment.*
- *Describe 4 ways to correctly fit your mount's bridle so it is safe and comfortable for your mount.*

What are some behaviors your mount may show if the bit is not fitted properly?

- 1.
- 2.
- 3.

LEADING & LONGEING

- *Lead safely from both sides at the walk.*
- *Demonstrate correctly jogging a mount in a bridle and turning in the correct direction which is away from you. (Whip may be carried and, if necessary, used to move mount forward.)*

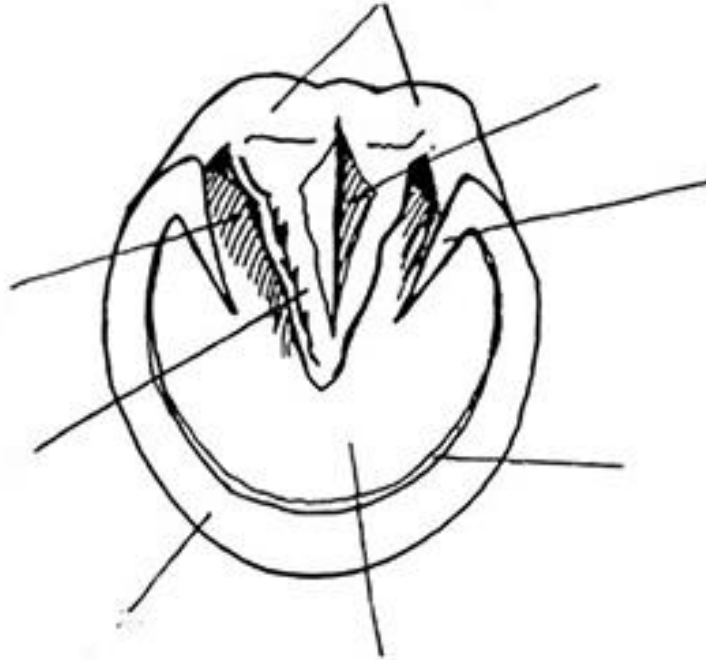
BANDAGING

- *Describe the 5 critical areas protected by shipping bandages or boots.*
 - 1.
 - 2.
 - 3.
 - 4.
 - 5.
- *Describe the area a stable bandage covers and what materials are used.*
 - 1.
 - 2.
- *Under direct supervision, apply a protective boot and 1 bell boot to a mount's leg and 1 polo wrap to a front leg with assistance, if needed.*

FOOT & SHOEING

- *Name 3 parts of the hoof.*

Label the diagram below



- *Describe 3 obvious signs of a foot needing shoeing or trimming.*

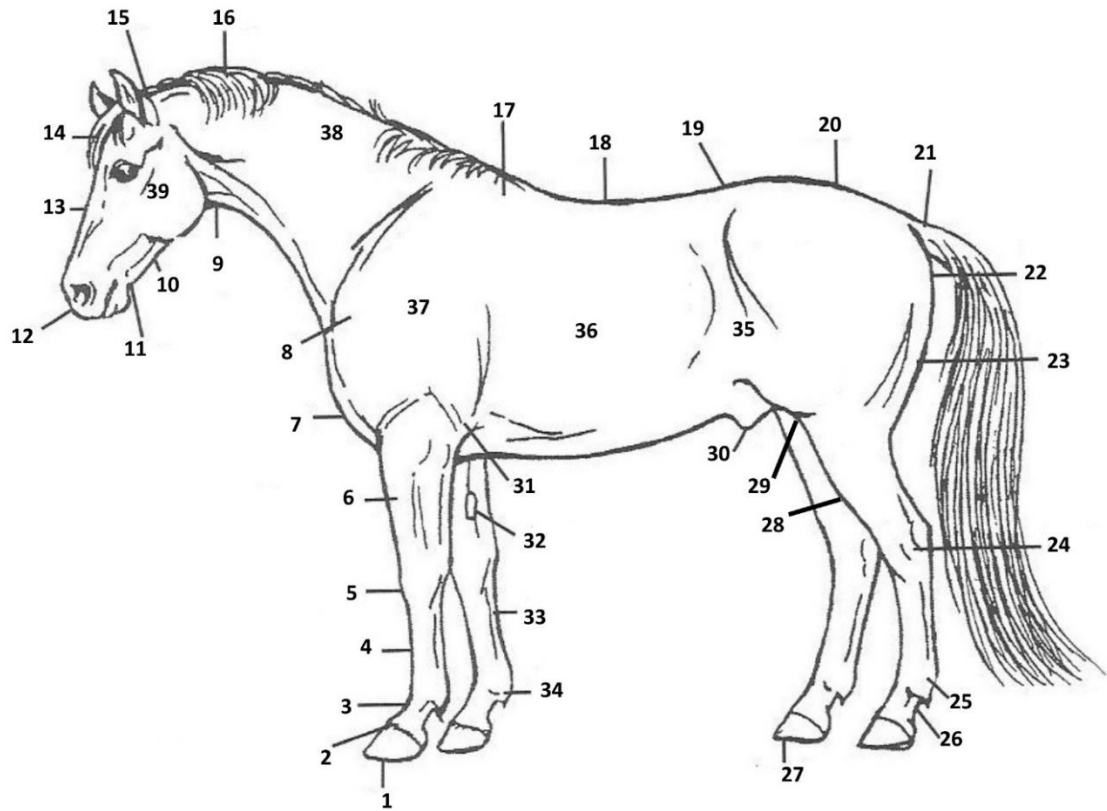
1.

2.

3.

BREEDS, PONY PARTS, CONFORMATION

- *Locate and name 20 parts of the mount.*



- | | | |
|-----|-----|-----|
| 1. | 14. | 27. |
| 2. | 15. | 28. |
| 3. | 16. | 29. |
| 4. | 17. | 30. |
| 5. | 18. | 31. |
| 6. | 19. | 32. |
| 7. | 20. | 33. |
| 8. | 21. | 34. |
| 9. | 22. | 35. |
| 10. | 23. | 36. |
| 11. | 24. | 37. |
| 12. | 25. | 38. |
| 13. | 26. | 39. |

- Name 10 equine breeds.

Can you name any specific pony or draft breeds as well?

1.

2.

3.

4.

5.

6.

7.

8.

9.

10.

- *Know 1 common conformation fault for each of the following: head, neck, shoulder, back, and pasterns.*

Conformation faults of the neck:

1.

2.

Conformation faults of the back:

1.

2.

Conformation faults of the shoulder:

1.

2.

Conformation faults of the head:

1.

2.

Conformation faults of the pasterns:

- 1.
 - 2.
- *Describe the eyes' location and how this affects the mount's vision.*

HEALTH AND MAINTENANCE RECORD BOOK

- *Provide a hard copy (in a folder/binder) of mount's Health and Maintenance Record Book that contains records for at least 3 months prior to the test. In addition to the information from the D-2 record book, records must contain:*
 - *Dated list of routine care (vaccinations, deworming, shoeing, and dentistry.)*
 - *Daily schedule of care which may include grooming, riding, and clinics, etc.*

Share your record book with your Pony Club instructor

STABLE MANAGEMENT

- *Discuss steps and reasons for cleaning a stall*
 - 1.
 - 2.
 - 3.
 - 4.
 - 5.
 - 6.
- *Demonstrate and discuss the proper methods of hanging a water bucket and hay net/hay bag at proper height for your mount, either in a trailer or in a stall.*

How high should the bucket be hung in the stall?

TRAVEL SAFETY

- *Name rules for riding safely on public roads.*

1.

2.

3.

4.

- *Describe the proper steps to load and unload a mount.*

Steps for loading a horse in the trailer:

1.

2.

3.

4.

5.

Steps for unloading a horse from the trailer:

1.

2.

3.

4.

5.

NUTRITION

- *Know 5 basic rules of feeding.*

1.

2.

3.

4.

5.

6.

7.

- *Describe how feeds are measured and weighed.*

- *Discuss the amount of roughage and the amount of concentrates per ration for own mount.*

Write down your mount's feeding schedule below:

	AM	Noon	PM
Roughage			
Concentrate			
Supplement			

CONDITIONING

- Describe care of mount after strenuous work, to include cooling out, checking legs, watering, and feeding.

- Describe two indications a mount may not be fit enough for the work asked of him/her.

1.

2.

- Know vital signs of mount at rest and what TPR stands for.

T- at rest = _____

P- at rest = _____

R- at rest = _____

What is the reason that we need TPR taken at rest?

LAND CONSERVATION

- *Name 3 important rules when riding across privately owned land.*

1.

2.

3.

4.

HEALTH CARE & VETERINARY KNOWLEDGE

- *Name 3 symptoms of a sick or injured mount that would cause you to seek help.*

1.

2.

3.

- *Name 3 diseases your horse can be vaccinated against.*

1.

2.

3.

4.

TEACHING

- *Describe how you assisted at 1 unmounted Pony Club activity.*

RIDER SAFETY

- *Name 2 items of rider equipment that are required to ride in a Pony Club mounted lesson.*

1.

2.

- *Give 2 examples of when a riding helmet needs replacing.*

1.

2.